



REVOLUTION HALL VENUE & TECH INFO

Venue Office Address / Shipping Address:

1300 SE Stark St, Suite 203 | Portland, OR 97214

<https://www.revolutionhall.com/>

VENUE CONTACTS

Al Parker, Production Director

ph: (847) 380-0551 | e: al@truewestpresents.com

Anya Gearhart, Production Manager

ph: (541) 232-6295 | e: anya@truewestpresents.co

LOAD-IN / PARKING / VENUE ACCESS

Parking varies depending on your vehicle. Tour buses, bandwagons, etc. will park along the curb at 531 SE 14th Ave, Portland, OR 97214 adjacent to fast fold signs with "no parking" city permits posted for your arrival. Vans & personal-sized vehicles will park in the small guest lot accessed off 14th Ave labeled "guest parking". Parking is limited, so please advance your parking needs accurately. From your vehicle, gear pushes into a door off the guest lot through two hallways to an elevator, then through another hallway directly to stage right. Several gear carts are available for loading. See the back of this packet for more parking info. The building is locked at all doors. For easiest access in and out of the building please use the door nearest the marquee on Stark and 14th. You will need to contact the PM on site to let you in.

DRESSING ROOMS

Dressing rooms are located on the stage level, behind the stage, off upstage left. One dressing room is furnished with a couch and table seating as well as a full-sized fridge and 1 restroom with a shower. Extra conference rooms are available upon request, furnished with tables & chairs. No laundry on site.

WIFI

Guest Network Name: REVGUEST / Password: musicburger

Production Network Name: REVPRODUCTION / Password: cookiecookie

MERCHANDISE

The merch area is located in the front lobby and is equipped with rolling tables, 2x tall grids, 2x short grids, clip lights, and power. If you need to ship merchandise to the venue, please let us know in advance and use the following address: Revolution Hall, Your Event Name, 1300 SE Stark St, Suite 203, Portland, OR 97214. Merch sellers can be provided for a fee of \$150 plus tips, paid by artist or licensee on the night of show. Venue will not be collecting merchandise cuts at this time. If you need to ship any merchandise following your event, we request shipping labels prior to your departure. Depending on the amount and duration merchandise is on site, this may incur a handling fee to ship out.

RESTAURANTS

We do have an in-house restaurant, Show Bar, and The Roof Deck (open seasonally) as well as other tasty options within walking distance to the venue. A full list of nearby amenities are in the back of this packet.

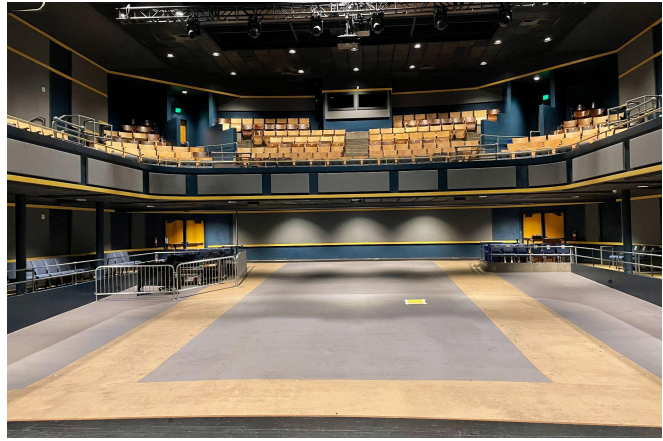
BACKLINE

Aside from guitar stands, rugs, and music stands, we do not have any backline available in-house. Local backline rentals can be arranged through SIR Portland, per advance.

RISERS

We have 4, 4'x8' decks that can be set at 1' or 2' height.

Decks can lock together and do not have rolling casters. Risers include skirting and a 2' stair unit.



ON STAGE

Revolution Hall's stage is a fixed stage with solid wood flooring and a proscenium opening.

STAGE DIMENSIONS: 33' wide by 22' deep, with small additional triangular shaped wings that taper toward the upstage wall.

PROSCENIUM DIMENSIONS: 38' wide by 21' tall.



SOFT GOODS

(1) x Full traveler curtain at the proscenium opening on a motor (fixed position & curtain speed).

(1) x Full upstage curtain (dead hung / fixed)

(1) x Set of legs (dead hung / fixed) mid-stage left & right

(1) x 30' Upstage pipe hung with rope & shivs for guest backdrops / scrims.

* Maximum weight capacity is 75lbs.

POWER

(3) x 100amp 3 phase cam lok services are located onstage, 1 dedicated for house audio (Stage left), 1 dedicated for house lighting (Stage right), and 1 available for guest power (Stage right). Guest power service is standard cam lok tie in, with ground and neutrals reversed. House turnarounds for ground and neutral available.

RIGGING

On-stage lighting is hung on 32' of 12 inch box truss with 2 motors each.

PA system is flown with motors with 1 motor/point per side.

FOH lighting truss is hung on 38' of 12 inch HD spigoted box truss with two motors.

Motor control is located downstage right.

Upstage screen is dead hung in a motorized box, the Downstage screen is on motors.

Any additional rigging needed beyond the venue installed systems must be thoroughly advanced.

HOUSE

We now have a removable seating system that will be setup or removed depending on the billing of the show. This cannot be changed without 48 hours advance notice, approved by the venue.

ELEVATOR

The primary (and largest) elevator is 75" wide by 65" deep, with a 42" opening.

INTERNET

Direct to modem non-firewall, point-to-point CAT6 unmanaged port plugins available at stage right, rear stage left, FOH, and aux positions back of auditorium. Speed conditions may vary: download upper limit: 1 GBPS, upload upper limit 200 MBPS. Network info above.



REVOLUTION HALL AUDIO SPECIFICATIONS

FRONT OF HOUSE CONSOLE: MIDAS HD96-24-CC-TP

Please Note: If the show is seated, we require engineers to sit at FOH through the show. Thank You.

48 - Inputs via (2) DL431 Input Splitters (Stage left)

48 - Transformer isolated split outs for use with any monitor console

8 - mic/line XLR Inputs, 8 analog XLR outputs, and 4 AES/3 I/O (Front of House)

1 - DL451 I/O w/ 16 XLR analog out (Stage left)

1 - DL451 I/O w/ 24 XLR analog out (Only available when Pro2c is used)(Stage Left)

FOH Mix Position is a 8'x8' area just off center of the main floor out from under the balcony.

Alternate Mix Position is a 8'x6' area under the balcony in the back of the room, house right.

Please Note: Monitors are mixed regularly from FOH with an ipad available to assist.

A Midas Pro2C is available for a rental fee of \$180. A monitor engineer can be provided pending the budget and show advance, and requires at least 48 hrs notice.

MAIN SPEAKERS & AMPLIFIERS

(8) Meyer JM1-P Powered Mains (4 per side)

(4) UPJ-1P powered fill speakers (2 per side)

(2) VUE Audiotechnik AS-418 Subwoofers (1 per side)

(3) Meyer Ultra - X22 powered lip fill speakers (3 on front stage edge)

(3) UP4xp Under-balcony fill speakers

(1) Meyer Galileo 408 system processor

(2) Powersoft Digam K3 Amps

MONITOR SPEAKERS

(10) Fulcrum Acoustics FA15 wedges

(2) Fulcrum Acoustics FA12 Wedges

(1) Fulcrum Acoustics FA15AC Wedge for Drum Box

(1) Fulcrum Acoustics TS215AC Dual 15" Subwoofer for Drum Box

(3) Ashly 8004 npx amps

HOUSE SNAKE SYSTEM

48 inputs on stage via Dual 431 Input Splitters

Separate head amps and gain available using any compatible Midas Console

48 Transformer isolated split outs from 431's for use with any monitor console

2 x DL451 Output Boxes on stage

16 Channel XLR return snake from FOH to stage left

(4) CAT5E with Ethercon RJ45 Connectors from Stage to FOH (2 are guest lines)

Sub Snakes: (4) 12 ch sub snakes, 2 x 40' and 2 x 20'; (2) 30' 24ch XLR snakes;

(1) 10' 8ch XLR snake

HOUSE MICROPHONES AND DI'S

Shure: (9) SM58, (7) Beta 58, (8) SM57, (2) SM81, (1) Beta 52, (1) Beta 91, (1) SM58 w/ Switch

Sennheiser: (2) MD421, (4) e904, (4) e914

Rev Hall does not currently have any wireless in-house.

DIs: (5) Radial JDI - Passive DI, (2) Radial J48 - Active DI, (1) Radial ProAV2 DI

Misc: Mic Stands, XLR cabling, AC stage power



REVOLUTION HALL LIGHTING EQUIPMENT LIST

CONTROL

GrandMA2 Light

House lighting control position is located in the balcony booth, in the center of the house. If the show is not seated, we will move the lighting console onto the floor next to FOH audio, barricaded using bike rack. House lights can be controlled at the lighting desk or by an on stage panel.

Please Note: If the show is seated, we require engineers to sit at FOH through the show. Thank You.

DATA

(1) Guest CAT5E and (1) Guest CAT6 lines from lighting booth to stage right

(2) SDI lines from lighting booth to FOH truss

* There are CAT lines from FOH position A and B to stage when FOH is on the main floor.

FIXTURES

FOH Truss

(6) Showline SL Beam 300 FX

(6) Source Four LED Series 2 Lustr

Mid Stage Truss

(4) Vari-Lite VL2600 Profile, (5) Clay Paky Mini-B, (5) Elation CuePix Blinder WW2, (1) 20" Mirror Ball

Up Stage Truss

(4) Vari-Lite VL2600 Profile, (5) Clay Paky Mini-B

Floor Package

(6) Showline SL Beam 300 FX, (8) Elation SixPar 100 RGBAW+UV

(1) Ultratec Radiance Hazer (Located Upstage Right)

*spot light(s) can be rented pending budget & show advance.

LIGHTING PLOT

Please see the following pages for the patch sheet and lighting plot.

VIDEO PROJECTION

(2) In-house screens; 1 is installed upstage and is 20' wide by 11.25' tall, Front Projection. The other is installed mid-stage at the Proscenium and is 26' wide by 14' tall, Front Projection.

(2) In-house projectors; the Primary Projector is a Digital Projection E-Vision 10K (graphic standards up to 1920 x 1200 resolution at 60Hz via HDMI, DisplayPort or VGA). The Backup Projector is an EIKI EIP-HDT30 HD Widescreen (full HD 1080p resolution, 8,000 lumens, 7,500:1 contrast ratio). We do have an in house switcher for video control.



LIGHTING PATCH

UPDATED 1.24.24

Make	Model	Mode	Description	Fixture Number	Address	
					U.	#
ETC	Source Four LED Series 2 Lustre	Direct (10 Channel)	FOH Ellipsoidal	1	1	201
				2	1	211
				3	1	221
				4	1	231
				5	1	241
Showline / Phillips	SL Beam 300 FX	Pattern (27 Channel)	FOH Wash	301	1	1
				302	1	28
				303	1	55
				304	1	82
				305	1	109
				306	1	136
Vari-Lite	VL 2600 Profile	16-Bit Enhanced (47 Channel)	Upstage Profile	101	3	201
				102	3	248
				103	3	295
				104	3	342
			Midstage Profile	105	2	201
				106	2	248
				107	2	295
				108	2	342
Clay Paky	Mini-B	Basic RGBW 16-bit (21 channel)	Upstage Wash	201	3	1
				202	3	22
				203	3	43
				204	3	64
				205	3	85
			Midstage Wash	206	2	1
				207	2	22
				208	2	43
				209	2	64
				210	2	85
Elation	Cuepix Blinder WW2	4 Channel	Blinders	601	2	401
				602	2	405
				603	2	409
				604	2	413
				605	2	417
Ultratec	Radiance Hazer	2 Channel (Haze / Fan)	Hazer	901	2	501
American DJ	DMX MB II	(Patch as single dimmer)	Mirror Ball Motor	902	2	512
Showline / Phillips	SL Beam 300 FX	Pattern (27 Channel)	Floor Wash (optional floor package)	401	4	1
				402	4	28
				403	4	55
				404	4	82
				405	4	109
				406	4	136
Elation	Sixpar 100	12 Channel	Floor Pars (optional floor package)	501	4	401
				502	4	413
				503	4	425
				504	4	437
				505	4	449
				506	4	461
				507	4	473
				508	4	485



LIGHT PLOT

UPDATED: 1.7.24

SCALE: 1/4" = 1'-0"

DRAWN BY:

Owen Walz | owenwalz@gmail.com

PRODUCTION MANAGER:

Al Parker | al@truewestpresents.com

KEY



VARI-LITE VL2600 Profile
16-BIT ENHANCED MODE
(47 CHANNELS)



CLAY PAKY MINI-B
BASIC RGBW 16-BIT MODE
(21 CHANNELS)



SHOWLINE SL BEAM 300 FX
PATTERN MODE
(27 CHANNELS)



ELATION CUEPIX BLINDER WW
4 CHANNEL MODE

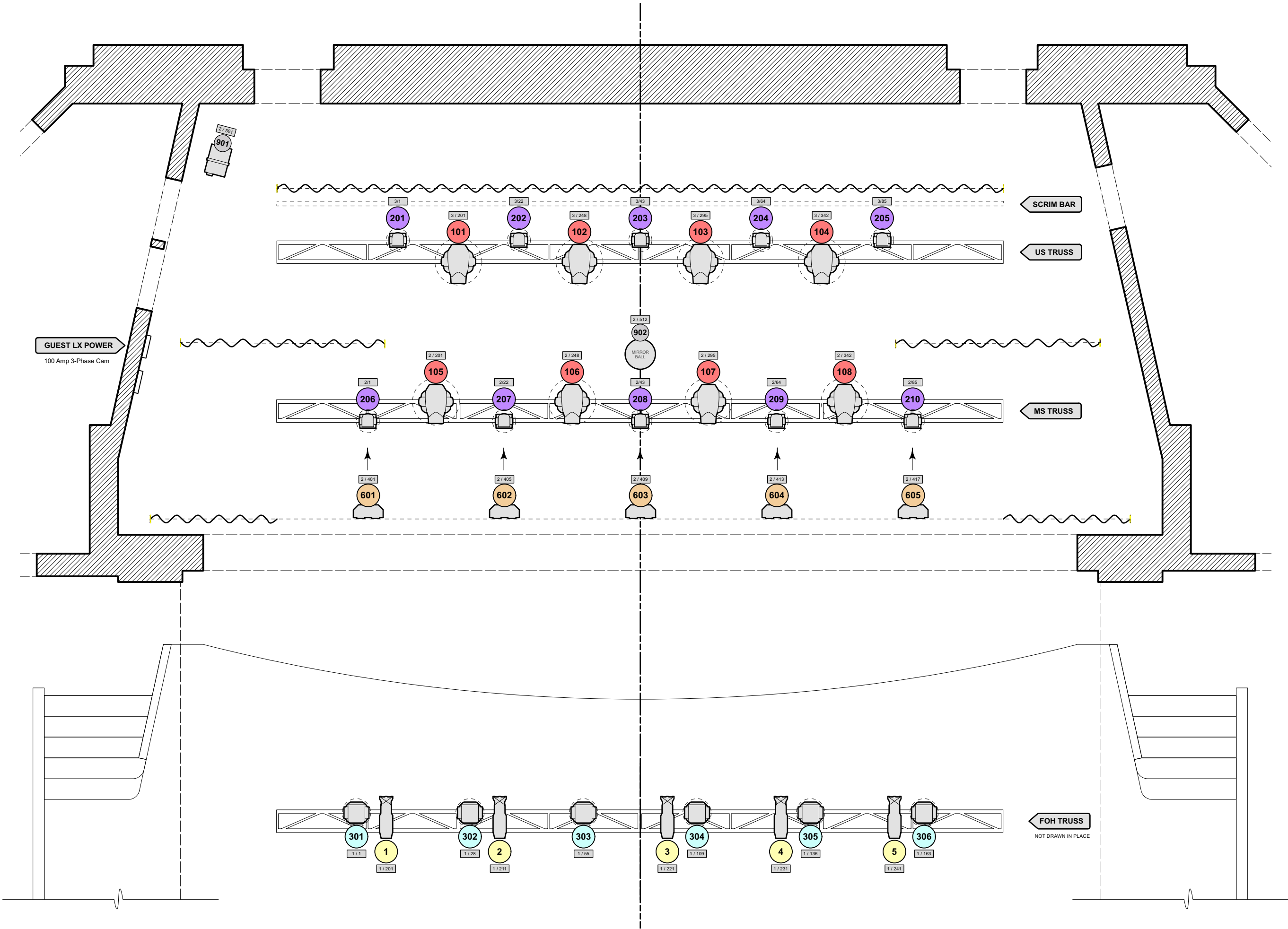
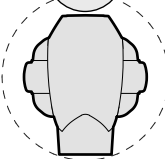


ETC SOURCE FOUR LED 19°
SERIES 2 LUSTRE
DIRECT / 10 CHANNEL

LEGEND

DMX ADDR.

FIX #



FOOD AND AMENITIES WALKABLE TO REVOLUTION HALL

Show Bar Bar, Delicious Burgers (21+ after 7pm)

Show Bar is located inside the venue building, accessed on the West side.

Sunee's Thai & Lao Kitchen Thai & Lao Food

Located directly across 14th Ave, 1 min walk
1400 SE Stark St, Portland, OR 97214

Ph: (503) 232-3957

Open Monday-Saturday for lunch & dinner,
closed weekdays from 330-400pm

Meat Cheese Bread

Breakfast, Sandwiches, & Salads

Located directly across 14th Ave, 1 min walk
1406 SE Stark Ave, Portland, OR 97214

Ph: (503) 234-1700

Open daily from 7am-3pm

Nostrana Italian Dishes & Thin Crust Pizzas

Located 0.2 mi S of the venue, est 3 min walk
1401 SE Morrison St #101, Portland, OR 97214

Ph: (503) 234-2427

Open Mon-Thurs, 5-9pm; Fri & Sat 5-10pm

RX Coffee Breakfast & Lunch Comfort Food

Located 0.2 mi S of the venue, est 4 min walk
1300 SE Morrison St, Portland, OR 97214

Ph: (503) 239-0196

Open Mon-Sat 730am-4pm, Sun 8:30am-4pm

Sweetpea Baking Co. Vegan bakery & espresso

Located 0.1 mi W of the venue, est. 2 min walk
1205 SE Stark St, Portland, OR 97214

Ph: (503) 477-5916

Open daily, 9am-3pm

Fermenter Vegan restaurant

Located 0.2 mi S of the venue, est. 4 min walk
1403 SE Belmont St, Portland, OR 97214

Open Wed - Fri, 12p-8pm, Sat & Sun 10am-8pm

Hungry Tiger Vegan Friendly Bar Fare

213 SE 12th Ave, Portland, OR 97214

Ph: (503) 238-4321

Open daily from 3pm-1am

CONVENIENCE & GROCERY STORES

Market of Choice Grocery store w/ on-site

kitchens w/ prepared food

Located 0.3 miles SE of venue, est 7 min walk

1090 SE Belmont St, Portland, OR 97214 | Ph:
(503) 236-6302

Open 7am-9pm Daily

Plaid Pantry closest convenience store

Located 0.2 mi SW of the venue, est 4 min walk

735 SE 12th Ave, Portland, OR 97214

Ph: (503) 235-9214

Open Daily, 24 hrs / day

DISPENSARY

Brothers Cannabis Dispensary

Located 0.2mi S of the venue, est 5 min walk

1328 SE Morrison St, Portland, OR 97214

Ph: (503) 206-4461

Open Mon-Sat, 9am-10pm; Sun, 10am-8pm

MUSIC STORE

Old Town Music

55 SE 11th Ave, Portland, OR 97214

Ph: (503) 295-6808

Open Daily, 11am-600pm

URGENT CARE

ZOOM+Care

2400 E Burnside St, Portland, OR 97214

Ph: (503) 684-8252

Open weekdays, 9am-7pm, wknds 9

DETAILED PARKING MAP

