



## REVOLUTION HALL VENUE & TECH INFO

Venue Office Address / Shipping Address:  
1300 SE Stark St, Suite 203 | Portland, OR 97214  
<https://www.revolutionhall.com/>

### VENUE CONTACTS

Katie Vanderpool, Production Manager  
c: (406) 546-7676 | e: [katie@truewestpresents.com](mailto:katie@truewestpresents.com)  
Ray Mullin, Venue General Manager  
c: (971) 645-2128 | e: [ray@mississippistudios.com](mailto:ray@mississippistudios.com)

### LOAD-IN / PARKING

Parking varies depending on your vehicle. Tour buses, bandwagons, etc. will park along the curb at 531 SE 14th Ave, Portland, OR 97214 adjacent to fast fold signs with "no parking" city permits posted for your arrival. Vans & personal-sized vehicles will park in the small lot accessed off 14th Ave labeled "guest parking". Parking is limited, so please advance your parking needs accurately. From your vehicle, gear pushes through two hallways to an elevator, then through another hallway directly onto stage right. Several gear carts are available for load-in & load-out. See map on page 6 for parking map.

### DRESSING ROOMS

Dressing rooms are located on the stage level, behind the stage, off upstage left. One dressing room is furnished with couch and table seating as well as a full-sized fridge and 1 restroom with shower. Additional conference rooms are available upon request, furnished with tables & chairs. No laundry available.

### WIFI

Backstage Network Name: rh-touring / Password: cookiecookie  
Merchandise Lobby Network Name: rh tour merch / Password: cookiecookie  
Auditorium Network Name: rev hall guest / Password: musicburger

### MERCHANDISE

Is located in the lobby and is equipped with rolling tables and power. *If you need to ship merchandise to the venue,* please let us know in advance and use the following address: Revolution Hall, Your Event Name, 1300 SE Stark St, Suite 203, Portland, OR 97214. Merch sellers can be provided for a flat fee of \$100 paid by artist or licensee on the night of show. Merchandise sales are subject to a venue split percentage, pending contract & advance. If you need to ship any merchandise following your event, we request shipping labels prior to your departure.

### RESTAURANTS

We have multiple delicious in-house restaurants including Marthas, Show Bar, and The Roof Deck (open seasonally) as well as many other tasty options within walking distance to the venue. For a full list of walkable recommendations, visit page 5 of this attachment.

### BACKLINE

Aside from guitar stands, keyboard stands, rugs, etc., we do not have any backline available in-house. Local backline rentals can be arranged through SIR Portland, per advance.

### RISERS

We have 4, 4'x8' decks that can be set at 1' or 2' height. Decks can lock together and do not have rolling casters. Risers include skirting and 2' stair units.



# REVOLUTION HALL AUDIO SPECIFICATIONS

FRONT OF HOUSE CONSOLE: MIDAS PRO 6 - 56 Channel Digital Mixer

48 - Inputs via (2) DL431 Input Splitters (Stage left)

48 - Transformer isolated split outs for use with any monitor console

8 - mic/line XLR Inputs, 8 analog XLR outputs, and 8 AES/3 I/O (Front of House)

1 - DL451 I/O w/ 8 XLR analog out, 8 AES3 I/O (Stage left)

1 - DL451 I/O w/ 16 XLR analog out (Stage left)

FOH Mix Position is a 6'x6' area just off center of the main floor out from under the balcony.

Alternate Mix Position is a 5'x6' area under the balcony in the back of the room, house right.

Monitors are from FOH with an ipad available to assist.

Monitor console & technician can be provided pending the budget and show advance.

## MAIN SPEAKERS & AMPLIFIERS

(8) Meyer JM1-P Powered Mains (4 per side)

(4) UPJ-1P powered fill speakers (2 per side)

(2) VUE Audiotechnik AS-418 Subwoofers (1 per side)

(3) UP4xp Under-balcony fill speakers

(1) Meyer Galileo 408 system processor

(3) Ashly 8004 nxp amps

(2) Powersoft Digam K3 Amps

## MONITOR SPEAKERS

(10) Fulcrum Acoustics FA15 wedges

(2) Fulcrum Acoustics FA12 Wedges

(1) Fulcrum Acoustics FA15AC Wedge for Drum Box

(1) Fulcrum Acoustics TS215AC Dual 15" Subwoofer for Drum Box

## HOUSE SNAKE SYSTEM

48 inputs on stage via Dual 431 Input Splitters

Separate head amps and gain available using any compatible Midas Console

48 Transformer isolated split outs for use with any monitor console

2 x DL451 Output Boxes on stage

16 Channel XLR return snake from FOH to stage left

(4) CAT6 with Ethercon RJ45 Connectors from Stage to FOH (2 are guest lines)

Sub Snakes: (4) 12 ch sub snakes, 2 x 40' and 2 x 20'; (2) 30' 24ch XLR snakes;

(1) 10' 8ch XLR snake

## HOUSE MICROPHONES AND DI'S

Shure: (9) SM58, (7) Beta 58, (8) SM57, (2) SM81, (1) Beta 52, (1) Beta 91, (1) SM58 w/ Switch

Sennheiser: (2) MD421, (4) e904, (4) r914

Wireless: (2) SLX4 with 58 Capsules

DIs: (5) Radial JDI - Passive DI, (2) Radio J48 - Active DI

Misc: Mic Stands, XLR cabling, AC stage power



# REVOLUTION HALL LIGHTING EQUIPMENT LIST

## *CONTROL*

GrandMa2 Light

House lighting control position is located in the balcony booth, in the center of the house

## *DATA*

(2) Guest DMX lines from lighting booth to stage right

(1) Guest CAT6 lines from lighting booth to stage right

(2) CAT6 lines from lighting booth to FOH truss

(2) SDI lines from lighting booth to FOH truss

## *FIXTURES*

FOH Truss

(6) ETC Source Four 19 deg (specials), (6) Elation ZW19 LED wash RGBW

Mid Stage Truss

(4) Mac Quantum Profile, (4) Elation ZW19 LED wash RGBW

Up Stage Truss

(4) Mac Quantum Profile, (4) Elation ZW19 LED wash RGBW

Floor Package

(6) Elation ZW19 LED wash RGBW, (4) Elation SIXPAR200

(1) Ultratec Radiance Hazer

(1) Altman Luminator follow spot in house with preferred position being in the lighting booth

\*Can rent additional spot light(s) pending budget & show advance.

## *LIGHTING PLOT*

Please see the following page for plot.

## *LIGHTING PATCH*

Additional plots & lighting patch sheets are available upon request.

## VIDEO PROJECTION

(2) In-house screens; 1 is installed upstage and is 20' wide by 11.25' tall, Front Projection. The other is installed mid-stage at the Proscenium and is 26' wide by 14' tall, Front Projection.

(2) In-house projectors; the Primary Projector is a Digital Projection E-Vision 10K (graphic standards up to 1920 x 1200 resolution at 60Hz via HDMI, DisplayPort or VGA). The Backup Projector is an EIKI EIP-HDT30 HD Widescreen (full HD 1080p resolution, 8,000 lumens, 7,500:1 contrast ratio).



**LIGHT PLOT**

UPDATED: 1.12.20  
SCALE: 1/4" = 1'-0"

**HOUSE LIGHTING CONTACT**  
Matt Reynolds  
matreynoldlighting@gmail.com

**PRODUCTION MANAGER:**  
Katie Vanderpool | 405.546.7878  
katie@buvwestpresents.com

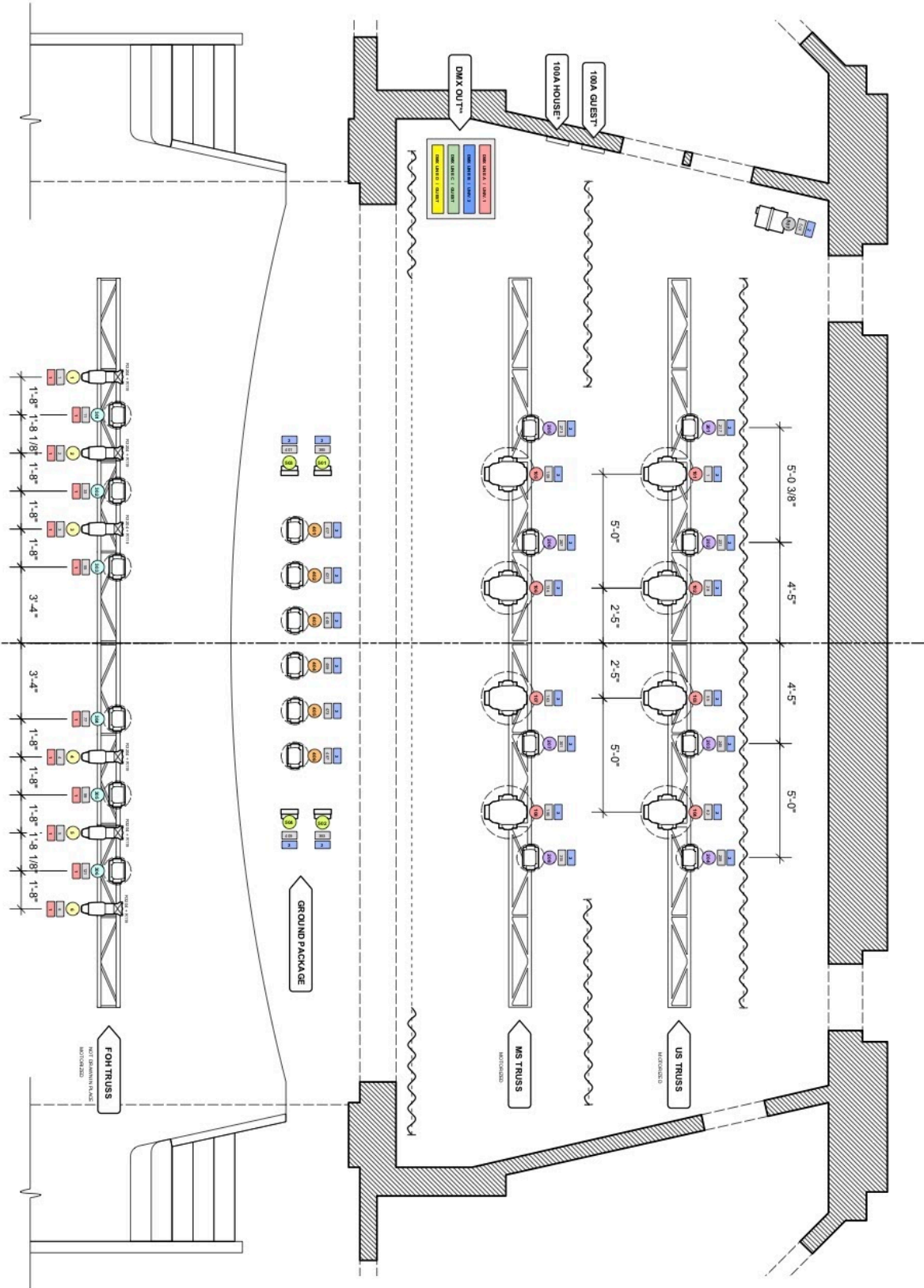
**KEY**

- MAC QUANTUM 1/8 BIT EXTENDED
- ELANON ZW19 22 CHANNEL (FCH) 14 CHANNEL (STAGE)
- ETC SOURCE FOUR 19' 1.075W
- ELANON SIKPAR 200 8 CHANNEL

**LEGEND**

- COLOR MIX
- DMX
- DMX

**NOTES:**  
- GUEST POWER: 100A 3-PHASE  
- GUEST DATA: 2 ADIMX, 1 X CAN 16  
- RUN FROM LIGHT BOOTH TO SR



## RESTAURANTS WALKABLE TO REVOLUTION HALL

Marthas *Coffee, Bar, Cafe, Patio (All Ages)*  
Showbar *Bar, Delicious Burgers (21+ after 7pm)*

*Both Martha's & Showbar are located inside the venue building, accessed on the West side.*

1300 SE Stark St, Portland, OR 97214

Martha's Hours\*: 7am-4pm, Monday - Friday;  
8am-4pm, Saturday & Sunday

*\*Open later on show nights*

*Showbar Hours: 4pm-12am daily.*

*Both locations offer happy hour from 4-6pm.*

Sunee's Thai & Lao Kitchen *Thai & Lao Food*

*Located directly across 14th Ave, 1 min walk*

1400 SE Stark St, Portland, OR 97214

Ph: (503) 232-3957

*Open daily for lunch & dinner, closed weekdays from 330-400pm*

Meat Cheese Bread

*Breakfast, Sandwiches & Salads*

*Located directly across 14th Ave, 1 min walk*

1406 SE Stark Ave, Portland, OR 97214

Ph: (503) 234-1700

*Open daily from 7am-5pm*

Nostrana *Italian Dishes & Thin Crust Pizzas*

*Located 0.2 mi S of the venue, est 3 min walk*

1401 SE Morrison St #101, Portland, OR 97214

Ph: (503) 234-2427

*Open weekdays, 1130am-2pm, 5-11pm*

*Weekends, 5-10pm*

Zell's Cafe *Breakfast & Lunch Comfort Food*

*Located 0.2 mi S of the venue, est 4 min walk*

1300 SE Morrison St, Portland, OR 97214

Ph: (503) 239-0196

*Open weekdays 7am-2pm, wknds, 8am-2pm*

Farm Spirit *Multi-course Vegan Menu*

*Located 0.3 mi S of the venue, est. 4 min walk*

1403 SE Belmont St, Portland, OR 97214

Ph: (971) 255-0329

*Open Wednesday thru Sunday, hours vary*

## CONVENIENCE & GROCERY STORES

Food Fight! Grocery *All Vegan Grocery Store*  
*Located 460' from venue (across Stark Street), est. 2 min walk*

1217 SE Stark St, Portland, OR 97214 | Ph:  
(503) 233-3910

*Open 9am-8pm Daily*

Market of Choice *Grocery store w/ on-site kitchens w/ prepared food*

*Located 0.3 miles SE of venue, est 7 min walk*

1090 SE Belmont St, Portland, OR 97214 | Ph:  
(503) 236-6302

*Open 7am-11pm Daily*

Plaid Pantry *closest convenience store*

*Located 0.2 mi SW of the venue, est 4 min walk*

735 SE 12th Ave, Portland, OR 97214

Ph: (503) 235-9214

*Open Daily, 24 hrs / day*

## DISPENSARY

Botanica Cannabis Dispensary

*Located 0.3mi NW of the venue, est 6 min walk*

128 SE 12th Ave, Portland, OR 97214

Ph: (503) 462-7220

*Open Daily, 10am-9pm*

## MUSIC STORE

Old Town Music

55 SE 11th Ave, Portland, OR 97214

Ph: (503) 295-6808

*Open Daily, 11am-630pm*

## URGENT CARE

ZOOM+Care

2400 E Burnside St, Portland, OR 97214

Ph: (503) 684-8252

*Open weekdays, 9am-7pm, wknds 9am-6pm*

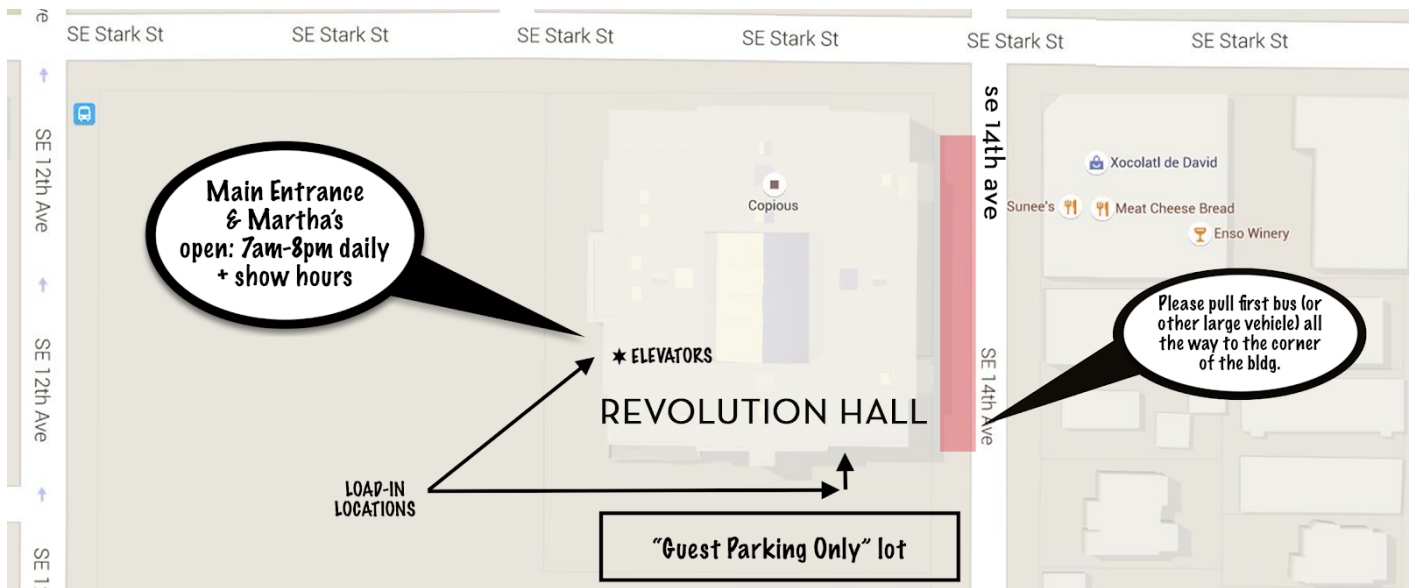


## PARKING INFORMATION

531 SE 14th Ave  
Portland, OR 97214

Larger vehicles such as buses, vans with trailers, etc., will park curbside along 14th Ave adjacent to barricades with "no parking" permits, attached for your arrival.

Vans without trailers, personal sized vehicles, etc., will park in the small lot accessed off 14th ave labeled, "Guest Parking".



### BUS DRIVERS:

- From SE Stark St, you'll turn South and park curbside at: 531 SE 14th Ave.
- Shore power is located approximately 15' from the sidewalk, please look for signage.
- Please, do NOT run your generators. Use the shore power or turn the engine off.
- After you are parked, feel free to use a parking barricade to place behind your trailer to ensure no one parks behind you for load-in.

### IF PARKING IN THE GUEST LOT:

- This parking lot is used heavily and is often full during local business office hours. Please let your day of show production contact know if you travel in more than 3 vehicles, or if you hope to park up prior to your load-in time so we can make sure a space is available for your arrival.