

*Last updated: January 2025*



## REVOLUTION HALL VENUE & TECH INFO

Venue Office Address / Shipping Address:

1300 SE Stark St, Suite 203 | Portland, OR 97214

<https://www.revolutionhall.com/>

### VENUE CONTACTS

Al Parker, Production Director

ph: (847) 380-0551 | e: [al@truewestpresents.com](mailto:al@truewestpresents.com)

Anya Gearhart, Production Manager

ph: (541) 232-6295 | e: [anya@truewestpresents.com](mailto:anya@truewestpresents.com)

### **LOAD-IN / PARKING / VENUE ACCESS**

Parking varies depending on your vehicle. Tour buses, bandwagons, etc. will park along the curb at 531 SE 14th Ave, Portland, OR 97214 adjacent to fast fold signs with "no parking" city permits posted for your arrival. Vans & personal-sized vehicles will park in the small guest lot accessed off 14th Ave labeled "guest parking". Parking is limited, so please advance your parking needs accurately. From your vehicle, gear pushes into a door off the guest lot through two hallways to an elevator, then through another hallway directly to stage right. Several gear carts are available for loading. See the back of this packet for more parking info. The building is locked at all doors. For easiest access in and out of the building please use the door nearest the marquee on Stark and 14th. You will need to contact the PM on site to let you in.

### **DRESSING ROOMS**

Dressing rooms are located on the stage level, behind the stage, off upstage left. One dressing room is furnished with a couch and table seating as well as a full-sized fridge and one restroom with a shower. Extra conference rooms are available upon request, furnished with tables & chairs. No laundry on site.

### **WIFI**

Guest Network Name: REV-GUEST / Password: musicburger

Production & Merch Network Name: REV-PRODUCTION / Password: cookiecookie

### **MERCHANDISE**

The merch area is located in the front lobby and is equipped with rolling tables, 2x tall grids, 4x short grids, clip lights, and power. *If you need to ship merchandise to the venue*, please let us know in advance and use the following address: Revolution Hall, Your Event Name, 1300 SE Stark St, Suite 203, Portland, OR 97214. Merch sellers can be provided for a fee of \$175 plus tips, paid by artist or licensee on the night of show. Venue will not be collecting merchandise cuts at this time. If you need to ship any merchandise following your event, we request shipping labels prior to your departure. Depending on the amount and duration merchandise is on site, this may incur a handling fee to ship out.

### **RESTAURANTS**

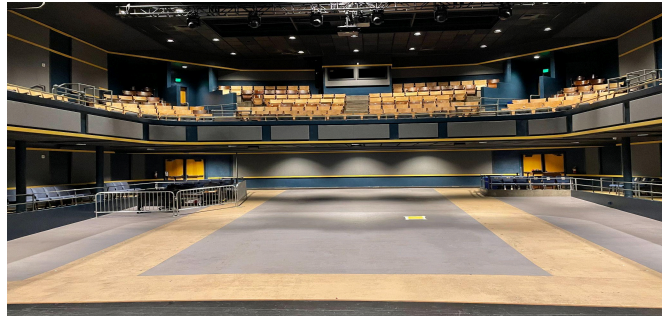
We do have an in-house restaurant, Show Bar, and The Roof Deck (open seasonally) as well as other tasty options within walking distance to the venue. A full list of nearby amenities are in the back of this packet.

### **BACKLINE**

Aside from guitar stands, rugs, and music stands, we do not have any backline available in-house. Local backline rentals can be arranged through SIR Portland, per advance.

### **RISERS**

We have (4) 4'x8' decks that can be set at 1' or 2' height. We have enough legs for (1) 4'x8'x16". Decks can lock together and do not have rolling casters. Risers include skirting and a 2' stair unit.



## **ON STAGE**

Revolution Hall's stage is a fixed stage with solid wood flooring and a proscenium opening.

STAGE DIMENSIONS: 33' wide by 22' deep, with small additional triangular shaped wings that taper toward the upstage wall.

PROSCENIUM DIMENSIONS: 38' wide by 21' tall.



## **SOFT GOODS**

(1) x Full traveler curtain at the proscenium opening on a motor (fixed position & curtain speed).

(1) x Full upstage curtain (dead hung / fixed)

(1) x Full upstage border (dead hung / fixed)

(1) x Set of legs (dead hung / fixed) mid-stage left & right

(1) x 29' Upstage pipe hung with rope & shivs for guest backdrops / scrims.

\* Maximum weight capacity is 100lbs. **At PM's discretion to cut if drops are too heavy.**

## **POWER**

(3) x 100amp 3 phase cam lok services are located onstage, 1 dedicated for house audio (Stage left), 1 dedicated for house lighting (Stage right), and 1 available for guest power (Stage right). Guest power service is standard cam lok tie in, with ground and neutrals reversed. House turnarounds for ground and neutral available.

## **RIGGING**

On-stage lighting is hung on 32' of 12 inch box truss with 2 motors each.

PA system is flown with motors with 1 motor/point per side.

FOH lighting truss is hung on 38' of 12 inch HD spigoted box truss with two motors.

Motor control is located downstage right.

The Upstage screen is dead hung in a motorized box, the Downstage screen is on motors.

Any additional rigging needed beyond the venue installed systems must be thoroughly advanced.

## **HOUSE SEATING**

We now have a removable seating system that will be set up or removed depending on the billing of the show. This cannot be changed without 48 hours advance notice, approved by the venue.

## **ELEVATOR**

The primary (and largest) elevator is 75" wide by 65" deep, with a 42" opening. The elevator door height is 82" and interior height is 116". **If large gear or carts are not advanced, they will not be taken upstairs if they do not fit. Please advance any stage carts or large scenery elements.**

## **INTERNET**

Direct to modem non-firewall, point-to-point CAT6 unmanaged port plugins available at stage right, rear stage left, FOH, and aux positions back of auditorium. Speed conditions may vary: download upper limit: 325 MBPS, upload upper limit 40 MBPS. Network info above.



# REVOLUTION HALL AUDIO SPECIFICATIONS

## **FRONT OF HOUSE CONSOLE: MIDAS HD96-24-CC-TP**

**Please Note:** If the show is seated, we require engineers to sit at FOH through the show. Thank You.

48 - Inputs via (2) DL431 Input Splitters (Stage left)

48 - Transformer isolated split outs for use with any monitor console

8 - mic/line XLR Inputs, 8 analog XLR outputs, and 4 AES/3 I/O (Front of House)

1 - DL451 I/O w/ 16 XLR analog out (Stage left)

1 - DL451 I/O w/ 24 XLR analog out (Only available when Pro2c is used)(Stage Left)

FOH Mix Position is a 8'x8' area just off center of the main floor out from under the balcony.

Alternate Mix Position is a 8'x6' area under the balcony in the back of the room, house right.

**Please Note:** Monitors are mixed regularly from FOH with an iPad available to assist.

A Midas Pro2c is available for a rental fee of \$180. A monitor engineer can be provided pending the budget and show advance, and requires at least 48 hrs notice.

## **MAIN SPEAKERS & AMPLIFIERS**

(8) Meyer JM1-P Powered Mains (4 per side)

(4) UPJ-1P powered fill speakers (2 per side)

(2) VUE Audiotechnik AS-418 Subwoofers (1 per side)

(3) Meyer Ultra - X22 powered lip fill speakers (3 on front stage edge)

(3) UP4xp Under-balcony fill speakers

(1) Meyer Galileo 408 system processor

(2) Powersoft Digam K3 Amps

## **MONITOR SPEAKERS**

(10) Fulcrum Acoustics FA15 wedges

(2) Fulcrum Acoustics FA12 Wedges

(1) Fulcrum Acoustics FA15AC Wedge for Drum Box

(1) Fulcrum Acoustics TS215AC Dual 15" Subwoofer for Drum Box

(3) Ashly 8004 npx amps

## **HOUSE SNAKE SYSTEM**

48 inputs on stage via Dual 431 Input Splitters

Separate head amps and gain available using any compatible Midas Console

48 Transformer isolated split outs from 431's for use with any monitor console

2 x DL451 Output Boxes on stage

16 Channel XLR return snake from FOH to stage left

(4) CAT5E with Ethercon RJ45 Connectors from Stage to FOH (2 are guest lines)

Sub Snakes: (4) 12 ch sub snakes, 2 x 40' and 2 x 20'; (2) 30' 24ch XLR snakes;

(1) 10' 8ch XLR snake

## **HOUSE MICROPHONES AND DI'S**

Shure: (9) SM58, (7) Beta 58, (8) SM57, (2) SM81, (1) Beta 52, (1) Beta 91, (1) SM58 w/ Switch

Sennheiser: (2) MD421, (4) e904, (4) e914

Rev Hall does not currently have any wireless in-house.

DIs: (5) Radial JDI - Passive DI, (2) Radial J48 - Active DI, (1) Radial ProAV2 DI

Misc: Mic Stands, XLR cabling, AC stage power



# REVOLUTION HALL LIGHTING EQUIPMENT LIST

## **CONTROL**

### GrandMA2 Light

House lighting control position is located in the balcony booth, in the center of the house. If the show is not seated, we will move the lighting console onto the floor next to FOH audio, barricaded using bike rack. House lights can be controlled at the lighting desk or by an on stage panel.

***Please Note: If the show is seated, we require engineers to sit at FOH through the show. Thank You.***

## **DATA**

(1) Guest CAT5E and (1) Guest CAT6 lines from lighting booth to stage right

(2) SDI lines from lighting booth to FOH truss

\* There are CAT lines from FOH position A and B to stage when FOH is on the main floor.

## **FIXTURES**

### FOH Truss

(8) Clay Paky Mini-B

### Mid Stage Truss

(4) Vari-Lite VL2600 Profile, (5) Clay Paky Mini-B, (5) Elation CuePix Blinder WW2, (1) 20" Mirror Ball

### Up Stage Truss

(4) Vari-Lite VL2600 Profile, (5) Clay Paky Mini-B

### Floor Package

(6) Showline SL Beam 300 FX, (8) Elation SixPar 100 RGBAW+UV

(1) Ultratec Radiance Hazer (Located Upstage Right)

\*spot light(s) can be rented pending budget & show advance.

## **LIGHTING PLOT**

Please see the following pages for the patch sheet and lighting plot.

## **VIDEO PROJECTION**

(2) In-house screens; 1 is installed upstage and is 20' wide by 11.25' tall, Front Projection. The other is installed just upstage of the Proscenium and is 26' wide by 14' tall, Front Projection.

(2) In-house projectors; the Primary Projector is a Digital Projection E-Vision 10K (graphic standards up to 1920 x 1200 resolution at 60Hz via HDMI, DisplayPort or VGA). The Backup Projector is an EIKI EIP-HDT30 HD Widescreen (full HD 1080p resolution, 8,000 lumens, 7,500:1 contrast ratio). We do have an in house switcher for video control.



LIGHT PLOT

UPDATED: 9.6.24

SCALE: 1/4" = 1'- 0"

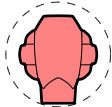
DRAWN BY:

Owen Walz | owenwalz@gmail.com

PRODUCTION MANAGER:

Al Parker | al@truewestpresents.com

KEY



VARI-LITE VL2600 Profile  
16-BIT ENHANCED MODE  
(47 CHANNELS)



CLAY PAKY MINI-B  
BASIC RGBW 16-BIT MODE  
(21 CHANNELS)



ELATION CUEPIX BLINDER WW  
4 CHANNEL MODE

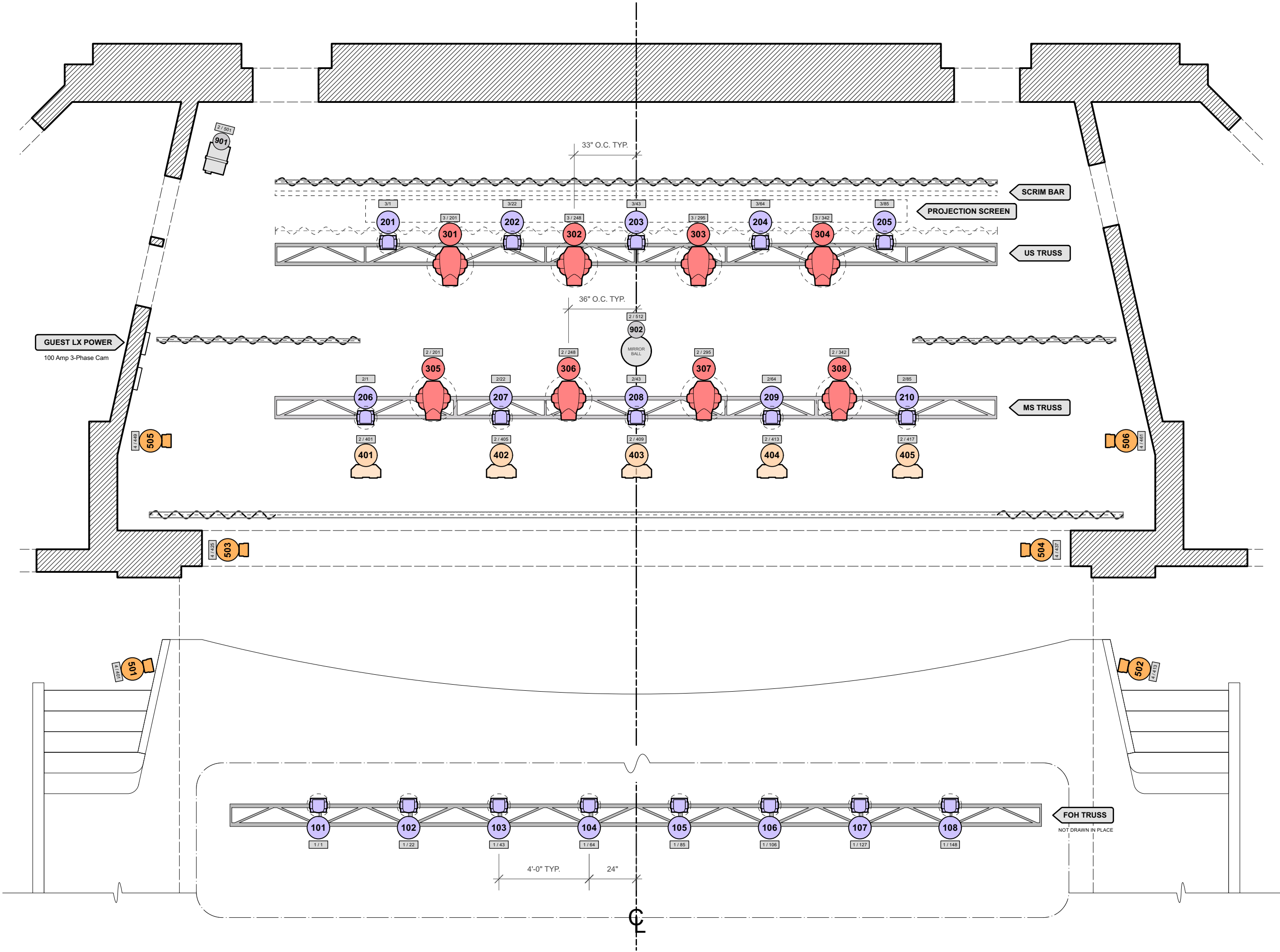
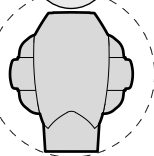


ELATION SIXPAR 100  
12 CHANNEL MODE

LEGEND

DMX ADDR.

FIX #





# LIGHTING PATCH

UPDATED 9.6.24

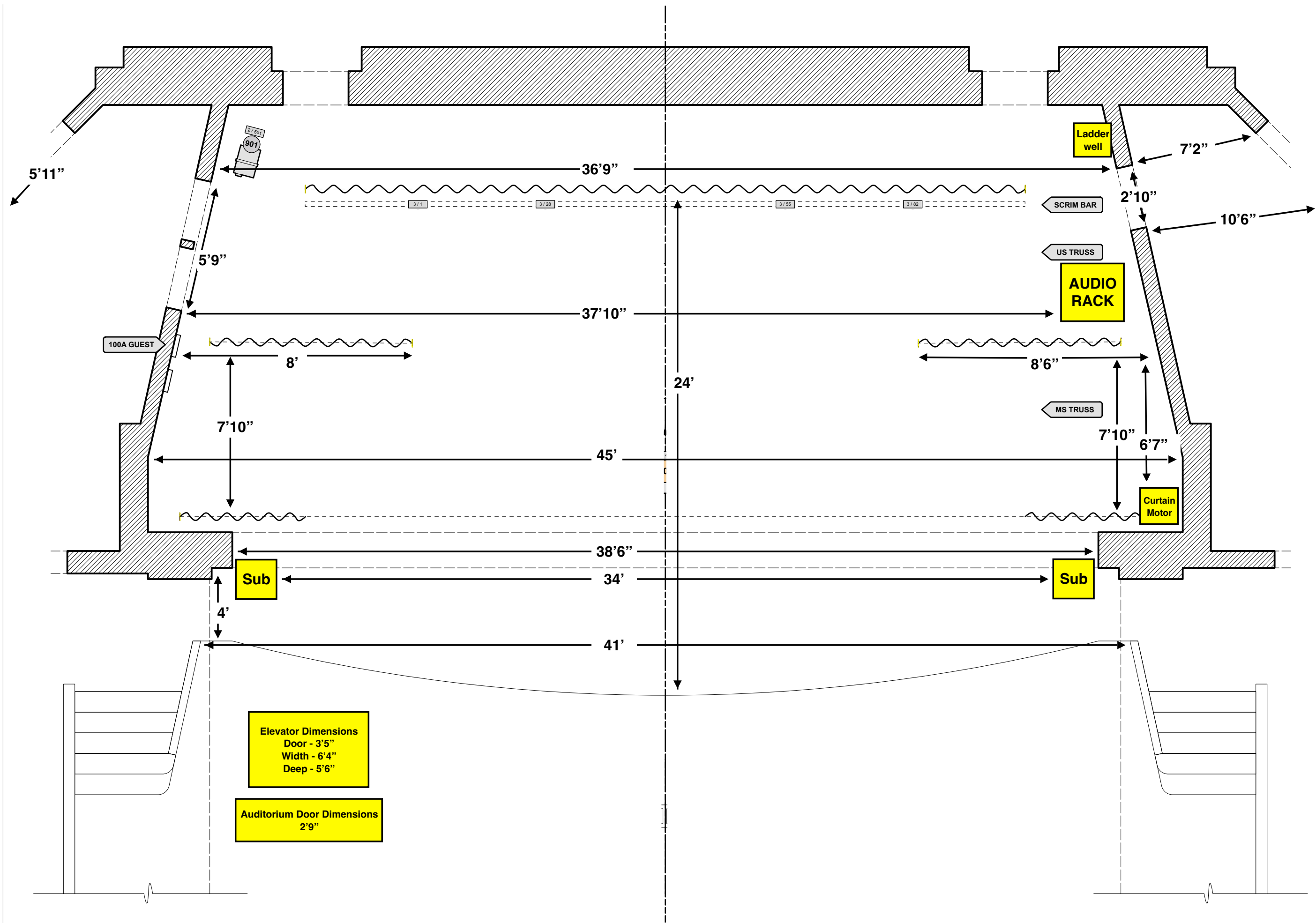
Make	Model	Mode	Location	Fixture Number	Address	
					U.	#
Clay Paky	Mini-B (Wash)	Basic RGBW 16-bit (21 Channel)	FOH Truss	101	1	1
				102	1	22
				103	1	43
				104	1	64
				105	1	85
				106	1	106
				107	1	127
				108	1	148
			Upstage Truss	201	3	1
				202	3	22
				203	3	43
				204	3	64
				205	3	85
			Midstage Truss	206	2	1
				207	2	22
				208	2	43
				209	2	64
				210	2	85
Vari-Lite	VL 2600 Profile	16-Bit Enhanced (47 Channel)	Upstage Truss	301	3	201
				302	3	248
				303	3	295
				304	3	342
			Midstage Truss	305	2	201
				306	2	248
				307	2	295
				308	2	342
Elation	Cuepix Blinder WW2	4 Channel	Midstage Truss	401	2	401
				402	2	405
				403	2	409
				404	2	413
				405	2	417
Elation	Sixpar 100	12 Channel	Downstage Right	501	4	401
			Downstage Left	502	4	413
			Sub SR	503	4	425
			Sub SL	504	4	437
			Midstage Right	505	4	449
			Midstage Left	506	4	461
Showline / Phillips	SL Beam 300 FX	Pattern (27 Channel)	Optional Floor Package	601	4	1
				602	4	28
				603	4	55
				604	4	82
				605	4	109
				606	4	136
				607	4	163
				608	4	190
Ultratec	Radiance Hazer	2 Channel (Haze / Fan)	Hazer	901	2	501
American DJ	DMX MB II	(Patch as single dimmer)	Mirror Ball Motor	902	2	512

PDX ⚡ ORE

REVOLUTION

Hall

Stage Dimensions  
"Rough Estimates"



# **FOOD AND AMENITIES WALKABLE TO REVOLUTION HALL**

## **Show Bar**

*In house Bar, Delicious Burgers (21+ after 6pm)  
Show Bar is located inside the venue building,  
accessed on the West side.*

## **Sunee's Thai & Lao Kitchen**

*Thai & Lao Food  
Located directly across 14th Ave, 1 min walk  
1400 SE Stark St, Portland, OR 97214  
Ph: (503) 232-3957  
Open Monday-Saturday for lunch & dinner,  
closed weekdays from 330-400pm*

## **Meat Cheese Bread**

*Breakfast, Sandwiches, & Salads  
Located directly across 14th Ave, 1 min walk  
1406 SE Stark Ave, Portland, OR 97214  
Ph: (503) 234-1700  
Open daily from 7am-3pm*

## **Nostrana**

*Italian Dishes & Thin Crust Pizzas  
Located 0.2 mi S of the venue, est 3 min walk  
1401 SE Morrison St #101, Portland, OR 97214  
Ph: (503) 234-2427  
Open Mon-Thurs, 5-9pm; Fri & Sat 5-10pm*

## **RX Coffee**

*Breakfast & Lunch Comfort Food Located 0.2  
mi S of the venue, est 4 min walk  
1300 SE Morrison St, Portland, OR 97214  
Ph: (503) 239-0196  
Open Mon-Sat 730am-4pm, Sun 8:30am-4pm*

## **Sweetpea Baking Co.**

*Vegan bakery & espresso  
Located 0.1 mi W of the venue, est. 2 min walk  
1205 SE Stark St, Portland, OR 97214  
Ph: (503) 477-5916  
Open daily, 9am-3pm*

## **Hungry Tiger**

*Vegan Friendly Bar Fare  
213 SE 12th Ave, Portland, OR 97214  
Ph: (503) 238-4321  
Open daily from 3pm-1am*

## **CONVENIENCE & GROCERY STORES**

### **Market of Choice**

*Grocery store w/ prepared food  
Located 0.3 miles SE of venue, est 7 min walk  
1090 SE Belmont St, Portland, OR 97214 | Ph:  
(503) 236-6302  
Open 7am-9pm Daily*

### **Plaid Pantry**

*Closest convenience store  
Located 0.2 mi SW of the venue, est 4 min walk  
735 SE 12th Ave, Portland, OR 97214  
Ph: (503) 235-9214  
Open Daily, 24 hrs / day*

## **DISPENSARY**

### **Brothers Cannabis Dispensary**

*Located 0.2mi S of the venue, est 5 min walk  
1328 SE Morrison St, Portland, OR 97214  
Ph: (503) 206-4461  
Open Mon-Sat, 9am-10pm; Sun, 10am-8pm*

## **MUSIC STORE**

### **Old Town Music**

*55 SE 11th Ave, Portland, OR 97214  
Ph: (503) 295-6808  
Open Daily, 11am-600pm*

## **URGENT CARE**

### **ZOOM+Care**

*2400 E Burnside St, Portland, OR 97214  
Ph: (503) 684-8252  
Open weekdays, 9am-7pm, wknds 9*

# **DETAILED PARKING MAP**

